

Coordination/Collaboration

Description of Current Metrics

Coordination and Collaboration –

Performance is presented for:

- Quarter 5 FY2013 Coordination of Care performance measure
 - Quarterly dashboard scores will roll up to an annual sample size reflecting a 90/10 sampling methodology
- Quarter 1 FY2014 Service utilization data submitted to ADHS/DBHS by the RBHAs
 - Readmission to a psychiatric hospital
 - Average length of stay in a psychiatric hospital

See below for historical trend charts.

Adults and Children Statewide

Do individuals and families get seamless behavioral and medical care coordination?

Individuals...	Adults Statewide	Children Statewide
Have their care coordinated with their medical doctor	87.0%	90.0%
Return to a psychiatric hospital	18.4%	7.1%
Stay in a psychiatric hospital an average of...days	10.6	10.1

Adults by GSA

Do individuals and families get seamless behavioral and medical care coordination?

Individuals....	GSA 1 NARBHA	GSA 2 Cenpatico	GSA 3 Cenpatico	GSA 4 Cenpatico	GSA 5 CPSA	GSA 6 Magellan
Have their care coordinated with their medical doctor	88.2%	87.5%	87.5%	88.2%	82.4%	88.2%
Return to a psychiatric hospital	10.6%	5.6%	17.6%	17.4%	16.5%	20.2%
Stay in a psychiatric hospital an average of...days	6.4	13.9	15.3	9.8	7.7	11.8

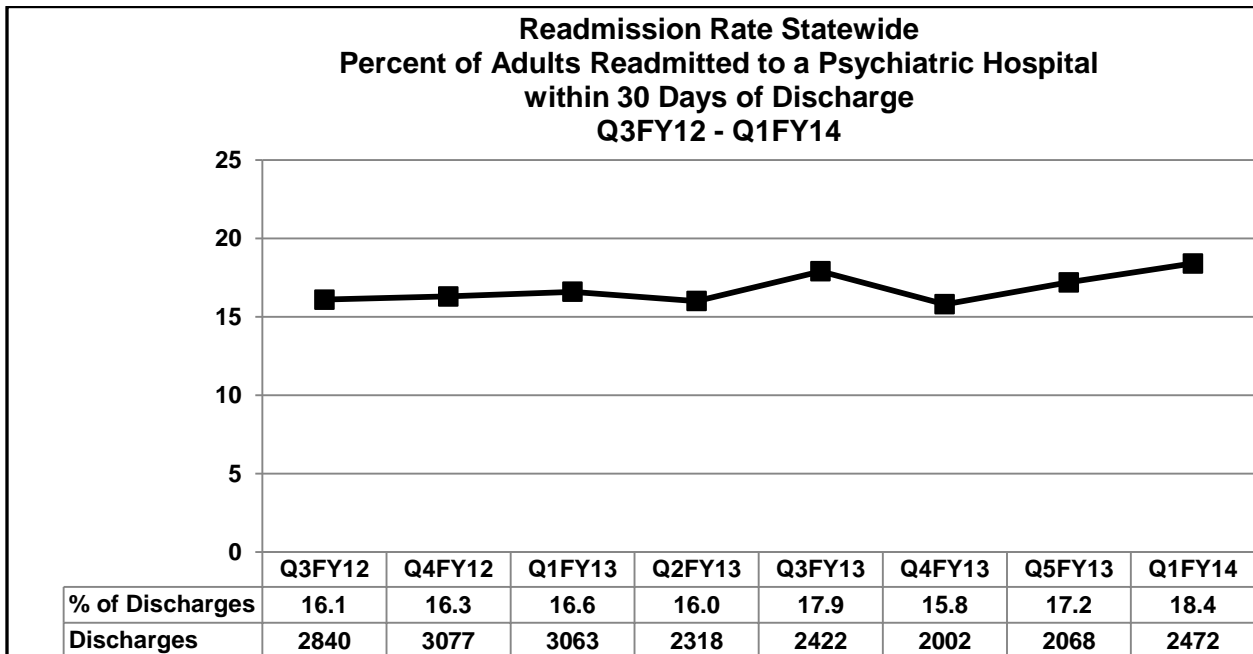
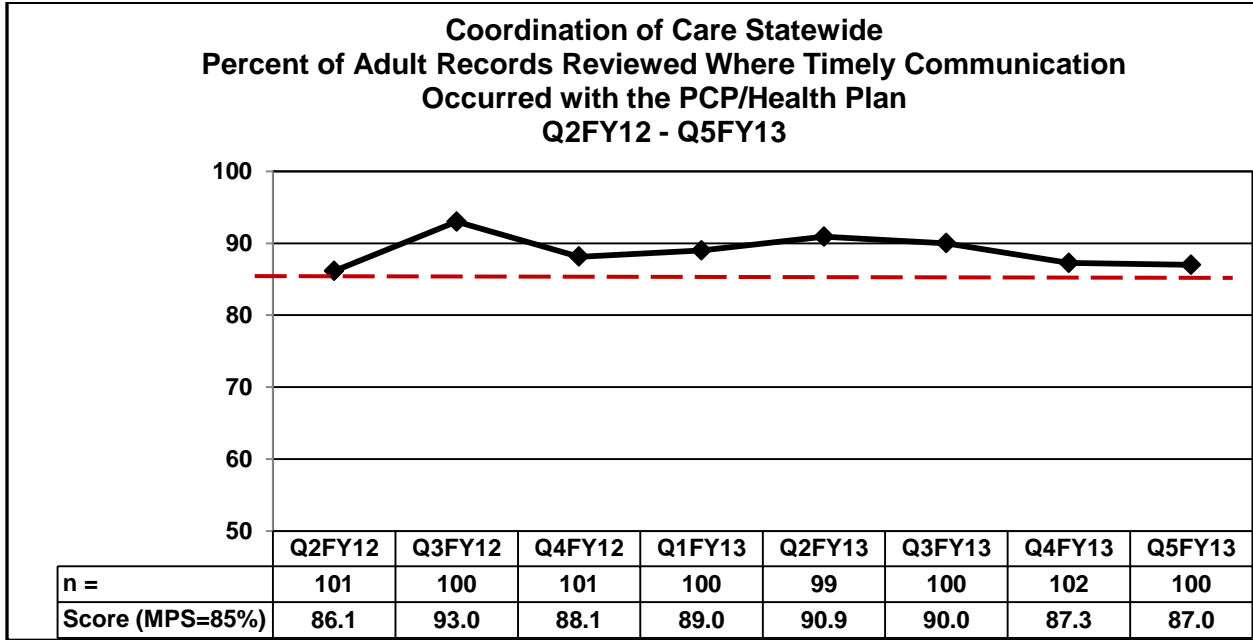
Children by GSA

Do individuals and families get seamless behavioral and medical care coordination?

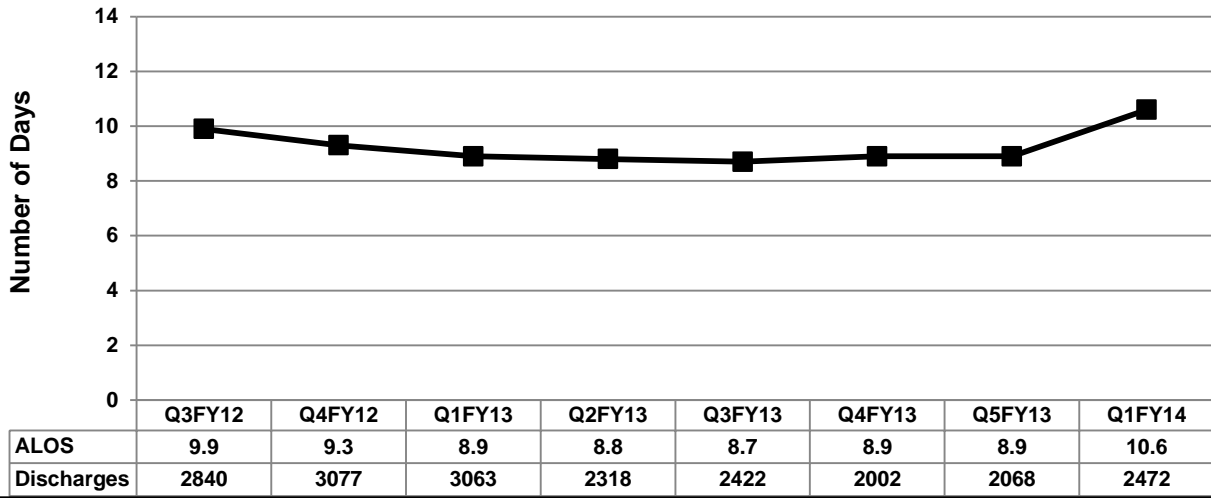
Individuals....	GSA 1 NARBHA	GSA 2 Cenpatico	GSA 3 Cenpatico	GSA 4 Cenpatico	GSA 5 CPSA	GSA 6 Magellan
Have their care coordinated with their medical doctor	100%	100%	100%	88.2%	64.7%	88.2%
Return to a psychiatric hospital	2.2%	11.1%	0.0%	14.3%	3.0%	8.1%
Stay in a psychiatric hospital an average of...days	14.0	8.7	10.6	9.4	12.9	9.1

Trend Charts

Adults Statewide

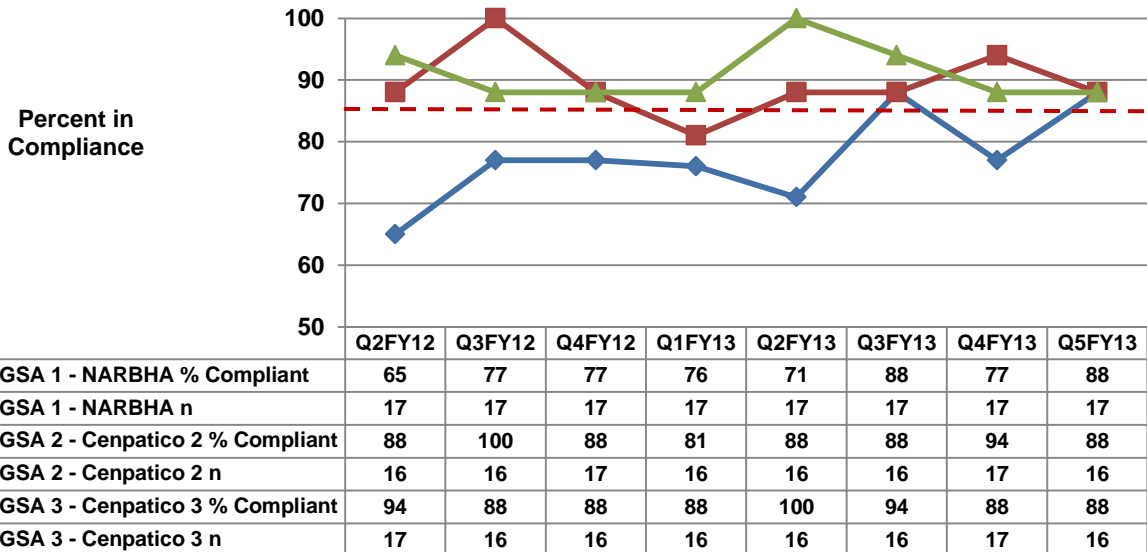


**Average Length of Stay Statewide
Adult Average Length of Stay in a Psychiatric Hospital
Q3FY13 - Q1FY14**

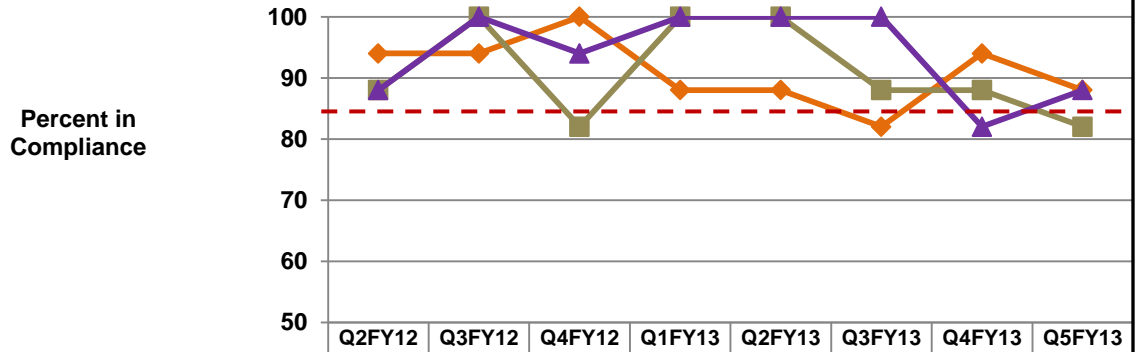


Adults by GSA

**Coordination of Care by GSA
Percent of Adult Records Reviewed Where Timely Communication
Occurred with the PCP/Health Plan**

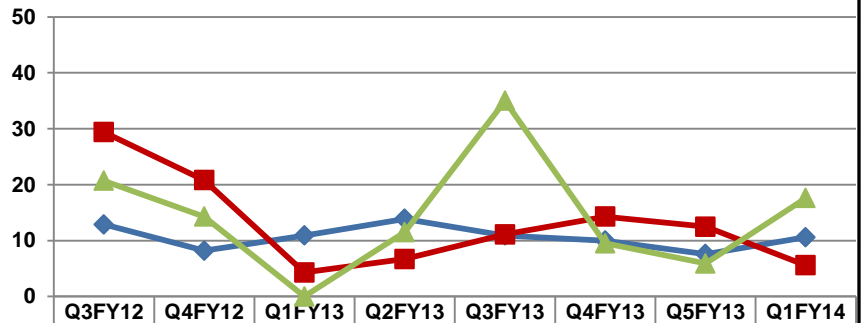


**Coordination of Care by GSA
Percent of Adult Records Reviewed Where Timely Communication
Occurred with the PCP/Health Plan**



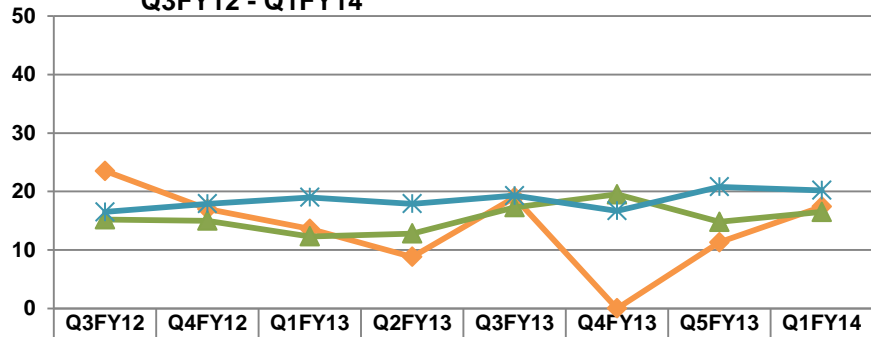
	Q2FY12	Q3FY12	Q4FY12	Q1FY13	Q2FY13	Q3FY13	Q4FY13	Q5FY13
GSA 4 - Cenpatico 4 % Compliant	94	94	100	88	88	82	94	88
GSA 4 - Cenpatico 4 n	17	17	17	17	16	17	17	17
GSA 5 - CPSA % Compliant	88	100	82	100	100	88	88	82
GSA 5 - CPSA n	17	17	17	17	17	17	17	17
GSA 6 - Magellan % Compliant	88	100	94	100	100	100	82	88
GSA 6 - Magellan n	17	17	17	17	17	17	17	17

**Readmission Rate by GSA
Percent of Adults Readmitted to a Psychiatric Hospital
within 30 Days of Discharge
Q3FY12 - Q1FY14**



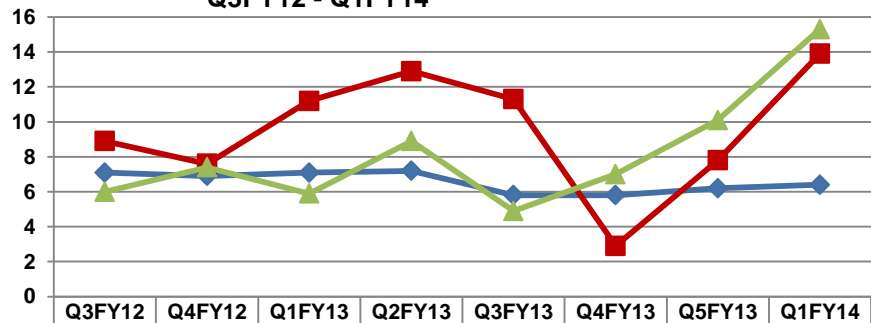
	Q3FY12	Q4FY12	Q1FY13	Q2FY13	Q3FY13	Q4FY13	Q5FY13	Q1FY14
GSA 1 - NARBHA Readmits	12.9	8.2	10.9	13.9	10.9	10.0	7.6	10.6
GSA 1 - NARBHA Discharges	348	330	348	323	329	309	356	263
GSA 2 - Cenpatico 2 Readmits	29.4	20.8	4.3	6.7	11.1	14.3	12.5	5.6
GSA 2 - Cenpatico 2 Discharges	17	24	23	15	9	7	16	18
GSA 3 - Cenpatico 3 Readmits	20.7	14.3	0.0	11.5	35.0	9.5	5.9	17.6
GSA 3 - Cenpatico 3 Discharges	29	42	14	26	20	21	17	34

Readmission Rate by GSA
Percent of Adults Readmitted to a Psychiatric Hospital
within 30 Days of Discharge
Q3FY12 - Q1FY14



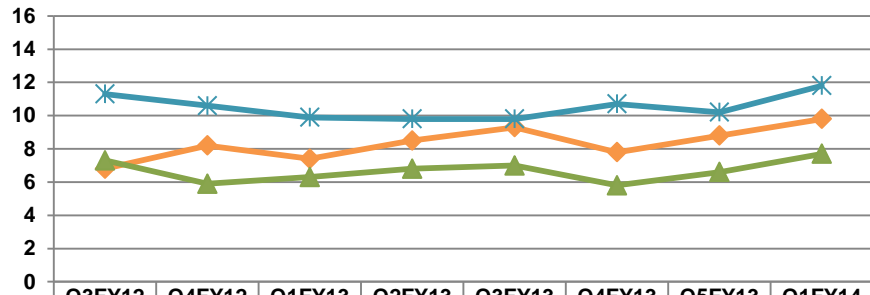
	Q3FY12	Q4FY12	Q1FY13	Q2FY13	Q3FY13	Q4FY13	Q5FY13	Q1FY14
GSA 4 - Cenpatico 4 Readmits	23.5	17.0	13.6	8.8	19.0	0.0	11.3	17.4
GSA 4 - Cenpatico 4 Discharges	68	53	66	68	42	36	53	69
GSA 5 - CPSA 5 Readmits	15.2	15.0	12.3	12.8	17.3	19.5	14.8	16.5
GSA 5 - CPSA 5 Discharges	495	520	529	422	434	359	330	411
GSA 6 - Magellan Readmits	16.5	17.9	19.0	17.9	19.3	16.7	20.8	20.2
GSA 6 - Magellan Discharges	1,883	2,108	2,083	1464	1,588	1,270	1,296	1677

Average Length of Stay by GSA
Adult Average Length of Stay in a Psychiatric Hospital
Q3FY12 - Q1FY14



	Q3FY12	Q4FY12	Q1FY13	Q2FY13	Q3FY13	Q4FY13	Q5FY13	Q1FY14
GSA 1 - NARBHA ALOS	7.1	6.9	7.1	7.2	5.8	5.8	6.2	6.4
GSA 1 - NARBHA Discharges	348	330	348	323	329	309	356	263
GSA 2 - Cenpatico 2 ALOS	8.9	7.6	11.2	12.9	11.3	2.9	7.8	13.9
GSA 2 - Cenpatico 2 Discharges	17	24	23	15	9	7	16	18
GSA 3 - Cenpatico 3 ALOS	6.0	7.4	5.9	8.9	4.9	7.0	10.1	15.3
GSA 3 - Cenpatico 3 Discharges	29	42	14	26	20	21	17	34

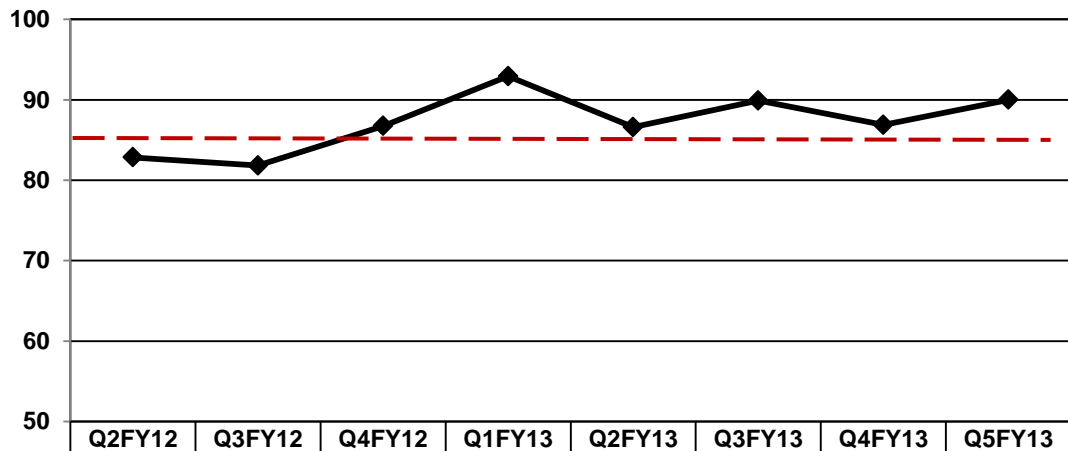
**Average Length of Stay by GSA
Adult Average Length of Stay in a Psychiatric Hospital
Q3FY12 - Q1FY14**



	Q3FY12	Q4FY12	Q1FY13	Q2FY13	Q3FY13	Q4FY13	Q5FY13	Q1FY14
GSA 4 - Cenpatico 4 ALOS	6.8	8.2	7.4	8.5	9.3	7.8	8.8	9.8
GSA 4 - Cenpatico 4 Discharges	68	53	66	68	42	36	53	69
GSA 5 - CPSA 5 ALOS	7.3	5.9	6.3	6.8	7.0	5.8	6.6	7.7
GSA 5 - CPSA 5 Discharges	495	520	529	422	434	359	330	411
GSA 6 - Magellan ALOS	11.3	10.6	9.9	9.8	9.8	10.7	10.2	11.8
GSA 6 - Magellan Discharges	1,883	2,108	2,083	1,464	1,588	1,270	1,296	1677

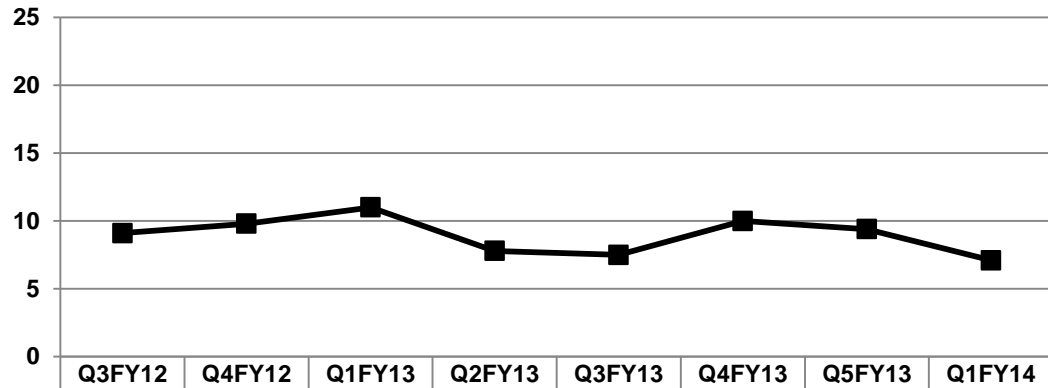
Children Statewide

**Coordination of Care Statewide
Percent of Children's Records Reviewed Where Timely Communication
Occurred with the PCP/Health Plan
Q2FY12 - Q5FY13**



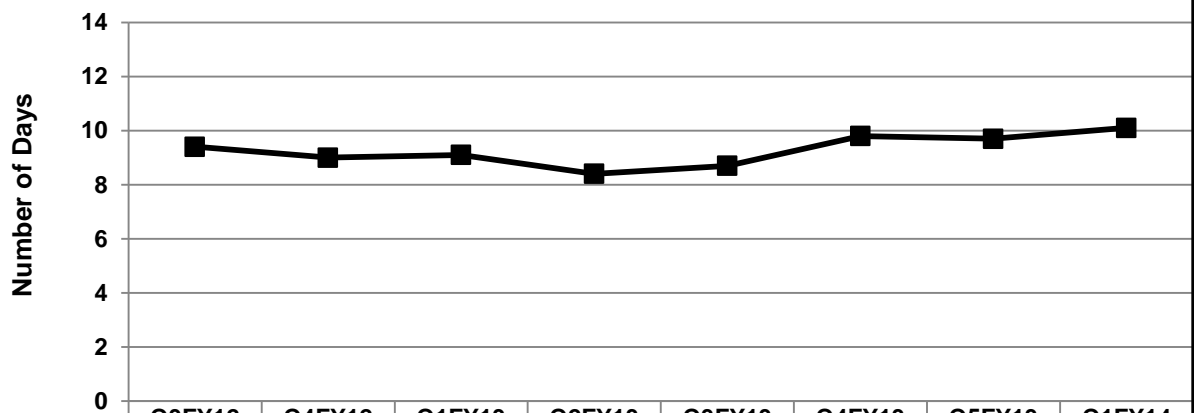
	Q2FY12	Q3FY12	Q4FY12	Q1FY13	Q2FY13	Q3FY13	Q4FY13	Q5FY13
n =	99	99	98	99	97	99	99	100
Score (MPS=85%)	82.8	81.8	86.7	92.9	86.6	89.9	86.9	90.0

**Readmission Rate Statewide
Percent of Children Readmitted to a Psychiatric Hospital
within 30 Days of Discharge
Q3FY12 - Q1FY14**



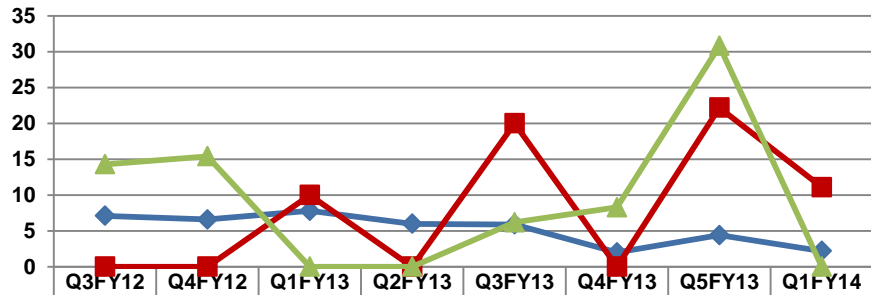
% of Discharges	9.1	9.8	11.0	7.8	7.5	10.0	9.4	7.1
Discharges	617	727	706	681	656	768	669	508

**Average Length of Stay Statewide
Children's Average Length of Stay in a Psychiatric Hospital
Q3FY12 - Q1FY14**



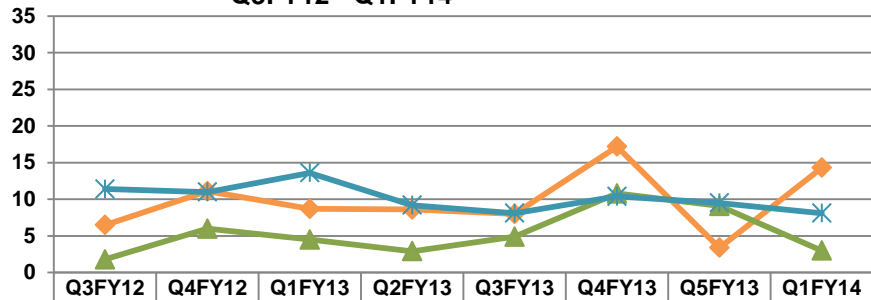
ALOS	9.4	9.0	9.1	8.4	8.7	9.8	9.7	10.1
Discharges	617	727	706	681	656	768	669	508

Readmission Rate by GSA
Percent of Children Readmitted to a Psychiatric Hospital
within 30 Days of Discharge
Q3FY12 - Q1FY14



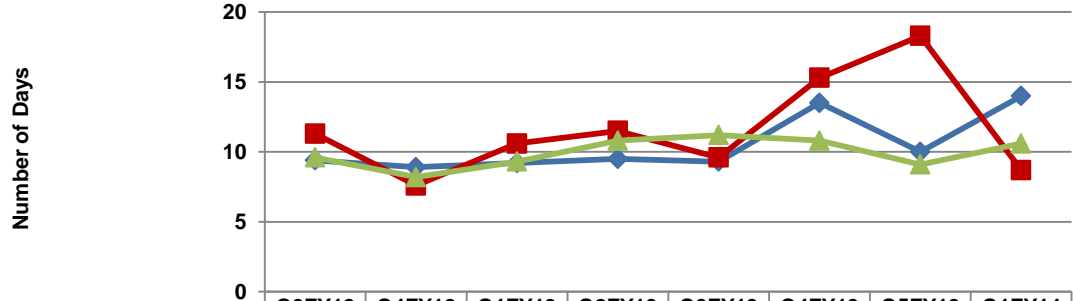
GSA 1 - NARBHA Readmits	7.1	6.6	7.8	6.0	5.9	2.0	4.4	2.2
GSA 1 - NARBHA Discharges	42	61	51	67	51	51	45	45
GSA 2 - Cenpatico 2 Readmits	0.0	0.0	10.0	0.0	20.0	0.0	22.2	11.1
GSA 2 - Cenpatico 2 Discharges	7	10	10	2	10	7	9	9
GSA 3 - Cenpatico 3 Readmits	14.3	15.4	0.0	0.0	6.2	8.3	30.8	0
GSA 3 - Cenpatico 3 Discharges	14	13	11	9	16	12	13	7

Readmission Rate by GSA
Percent of Children Readmitted to a Psychiatric Hospital
within 30 Days of Discharge
Q3FY12 - Q1FY14



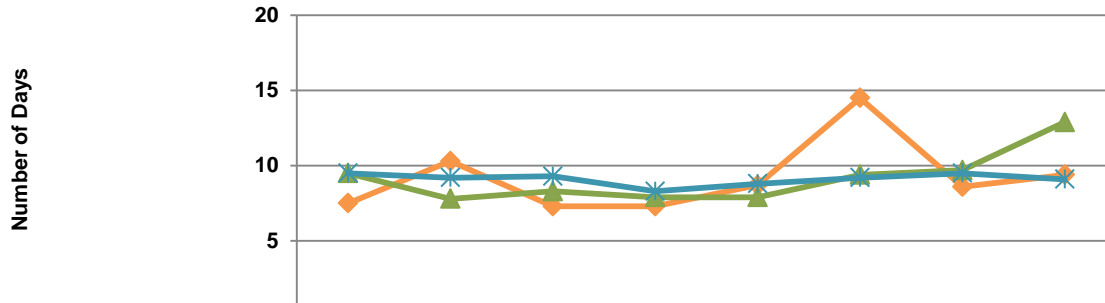
GSA 4 - Cenpatico 4 Readmits	6.5	11.1	8.7	8.6	8.0	17.2	3.4	14.3
GSA 4 - Cenpatico 4 Discharges	31	36	23	35	25	29	29	21
GSA 5 - CPSA 5 Readmits	1.8	6.0	4.5	2.9	4.9	10.8	9.1	3
GSA 5 - CPSA 5 Discharges	112	117	133	103	122	148	121	67
GSA 6 - Magellan Readmits	11.4	11.0	13.6	9.2	8.1	10.4	9.5	8.1
GSA 6 - Magellan Discharges	411	490	478	465	432	521	452	359

Average Length of Stay by GSA
Children's Average Length of Stay in a Psychiatric Hospital
Q3FY12 - Q1FY14



	Q3FY12	Q4FY12	Q1FY13	Q2FY13	Q3FY13	Q4FY13	Q5FY13	Q1FY14
◆ GSA 1 - NARBHA ALOS	9.4	8.9	9.2	9.5	9.3	13.5	10.0	14
GSA 1 - NARBHA Discharges	42	61	51	67	51	51	45	45
■ GSA 2 - Cenpatico 2 ALOS	11.3	7.6	10.6	11.5	9.6	15.3	18.3	8.7
GSA 2 - Cenpatico 2 Discharges	7	10	10	2	10	7	9	9
▲ GSA 3 - Cenpatico 3 ALOS	9.6	8.2	9.3	10.8	11.2	10.8	9.1	10.6
GSA 3 - Cenpatico 3 Discharges	14	13	11	9	16	12	13	7

Average Length of Stay by GSA
Children's Average Length of Stay in a Psychiatric Hospital
Q3FY12 - Q1FY14



	Q3FY12	Q4FY12	Q1FY13	Q2FY13	Q3FY13	Q4FY13	Q5FY13	Q1FY14
◆ GSA 4 - Cenpatico 4 ALOS	7.5	10.3	7.3	7.3	8.7	14.5	8.6	9.4
■ GSA 4 - Cenpatico 4 Discharges	31	36	23	35	25	29	29	21
▲ GSA 5 - CPSA 5 ALOS	9.5	7.8	8.3	7.9	7.9	9.4	9.7	12.9
✱ GSA 5 - CPSA 5 Discharges	112	117	133	103	122	148	121	67
✱ GSA 6 - Magellan ALOS	9.5	9.2	9.3	8.3	8.8	9.2	9.5	9.1
◆ GSA 6 - Magellan Discharges	411	490	478	465	432	521	452	359