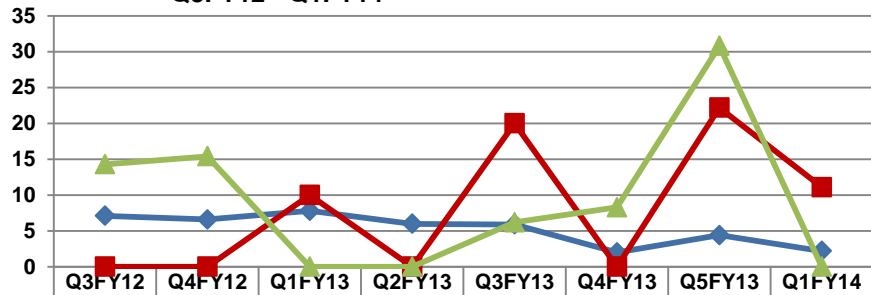


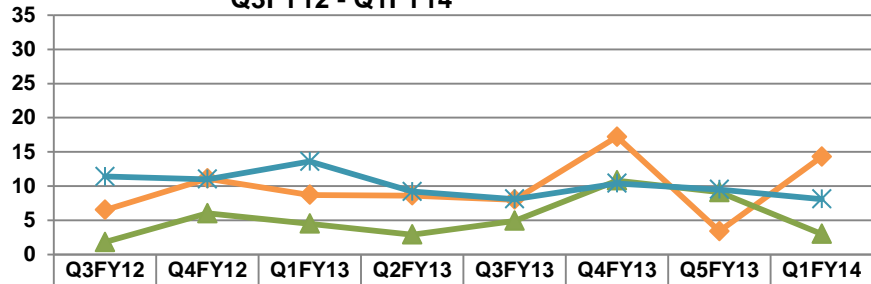


**Readmission Rate by GSA**  
**Percent of Children Readmitted to a Psychiatric Hospital**  
**within 30 Days of Discharge**  
**Q3FY12 - Q1FY14**



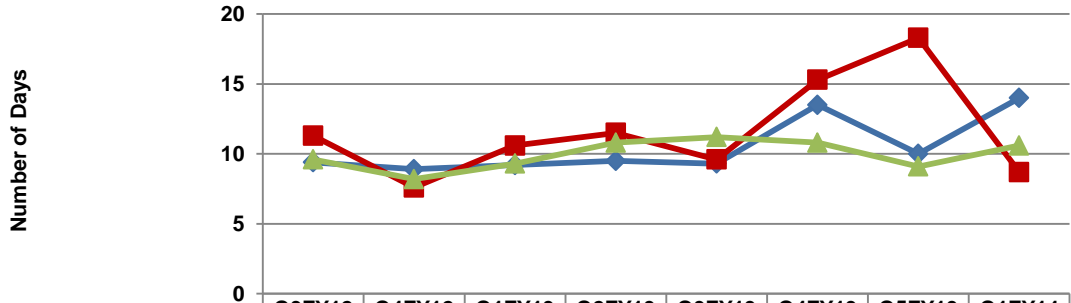
	Q3FY12	Q4FY12	Q1FY13	Q2FY13	Q3FY13	Q4FY13	Q5FY13	Q1FY14
GSA 1 - NARBHA Readmits	7.1	6.6	7.8	6.0	5.9	2.0	4.4	2.2
GSA 1 - NARBHA Discharges	42	61	51	67	51	51	45	45
GSA 2 - Cenpatico 2 Readmits	0.0	0.0	10.0	0.0	20.0	0.0	22.2	11.1
GSA 2 - Cenpatico 2 Discharges	7	10	10	2	10	7	9	9
GSA 3 - Cenpatico 3 Readmits	14.3	15.4	0.0	0.0	6.2	8.3	30.8	0
GSA 3 - Cenpatico 3 Discharges	14	13	11	9	16	12	13	7

**Readmission Rate by GSA**  
**Percent of Children Readmitted to a Psychiatric Hospital**  
**within 30 Days of Discharge**  
**Q3FY12 - Q1FY14**



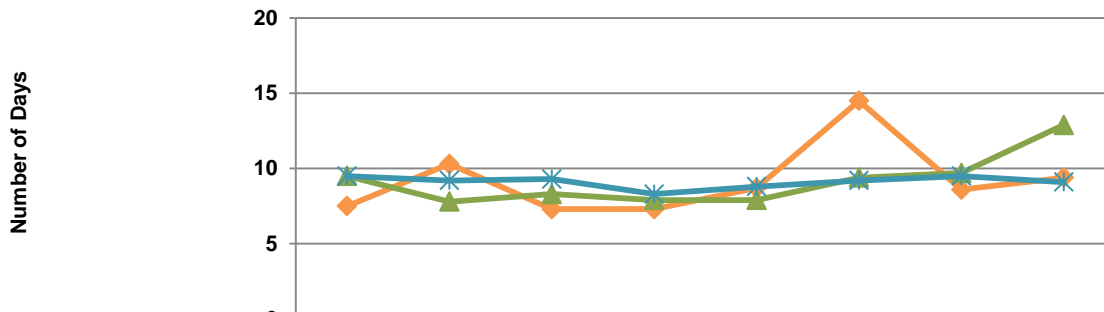
	Q3FY12	Q4FY12	Q1FY13	Q2FY13	Q3FY13	Q4FY13	Q5FY13	Q1FY14
GSA 4 - Cenpatico 4 Readmits	6.5	11.1	8.7	8.6	8.0	17.2	3.4	14.3
GSA 4 - Cenpatico 4 Discharges	31	36	23	35	25	29	29	21
GSA 5 - CPSA 5 Readmits	1.8	6.0	4.5	2.9	4.9	10.8	9.1	3
GSA 5 - CPSA 5 Discharges	112	117	133	103	122	148	121	67
GSA 6 - Magellan Readmits	11.4	11.0	13.6	9.2	8.1	10.4	9.5	8.1
GSA 6 - Magellan Discharges	411	490	478	465	432	521	452	359

**Average Length of Stay by GSA**  
**Children's Average Length of Stay in a Psychiatric Hospital**  
**Q3FY12 - Q1FY14**



	Q3FY12	Q4FY12	Q1FY13	Q2FY13	Q3FY13	Q4FY13	Q5FY13	Q1FY14
◆ GSA 1 - NARBHA ALOS	9.4	8.9	9.2	9.5	9.3	13.5	10.0	14
GSA 1 - NARBHA Discharges	42	61	51	67	51	51	45	45
■ GSA 2 - Cenpatico 2 ALOS	11.3	7.6	10.6	11.5	9.6	15.3	18.3	8.7
GSA 2 - Cenpatico 2 Discharges	7	10	10	2	10	7	9	9
▲ GSA 3 - Cenpatico 3 ALOS	9.6	8.2	9.3	10.8	11.2	10.8	9.1	10.6
GSA 3 - Cenpatico 3 Discharges	14	13	11	9	16	12	13	7

**Average Length of Stay by GSA**  
**Children's Average Length of Stay in a Psychiatric Hospital**  
**Q3FY12 - Q1FY14**



	Q3FY12	Q4FY12	Q1FY13	Q2FY13	Q3FY13	Q4FY13	Q5FY13	Q1FY14
◆ GSA 4 - Cenpatico 4 ALOS	7.5	10.3	7.3	7.3	8.7	14.5	8.6	9.4
■ GSA 4 - Cenpatico 4 Discharges	31	36	23	35	25	29	29	21
▲ GSA 5 - CPSA 5 ALOS	9.5	7.8	8.3	7.9	7.9	9.4	9.7	12.9
✱ GSA 5 - CPSA 5 Discharges	112	117	133	103	122	148	121	67
✱ GSA 6 - Magellan ALOS	9.5	9.2	9.3	8.3	8.8	9.2	9.5	9.1
◆ GSA 6 - Magellan Discharges	411	490	478	465	432	521	452	359