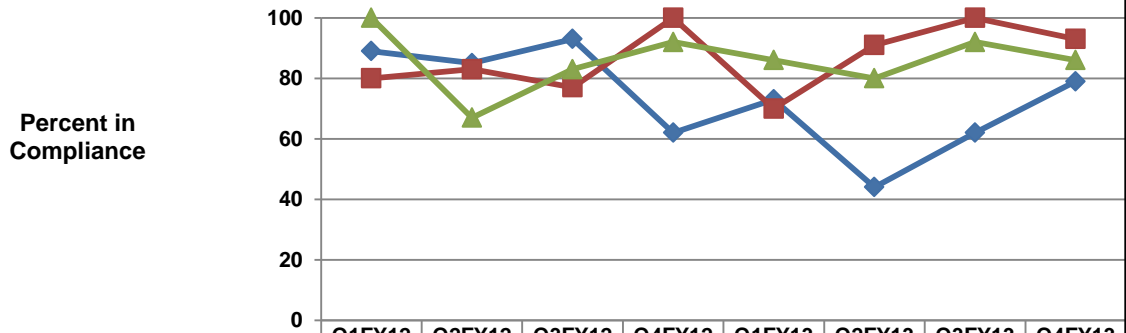
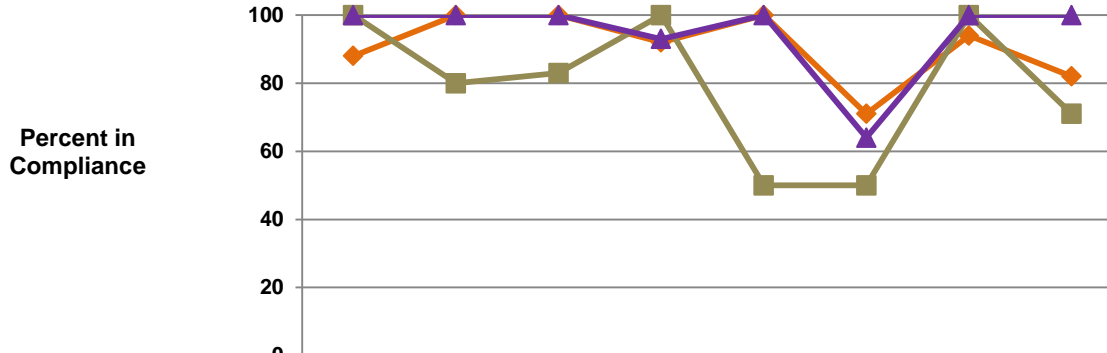


Behavioral Health Service Provision by GSA
Percent of Children's Records Reviewed where Services were Provided
as Indicated on the Service Plan



	Q1FY12	Q2FY12	Q3FY12	Q4FY12	Q1FY13	Q2FY13	Q3FY13	Q4FY13
◆ GSA 1 - NARBHA % Compliant	89	85	93	62	73	44	62	79
GSA 1 - NARBHA n	9	13	14	13	15	16	13	14
■ GSA 2 - Cenpatico 2 % Compliant	80	83	77	100	70	91	100	93
GSA 2 - Cenpatico 2 n	5	6	13	13	10	11	13	15
▲ GSA 3 - Cenpatico 3 % Compliant	100	67	83	92	86	80	92	86
GSA 3 - Cenpatico 3 n	2	3	6	13	14	10	12	14

Behavioral Health Service Provision by GSA
Percent of Children's Records Reviewed where Services were Provided
as Indicated on the Service Plan



	Q1FY12	Q2FY12	Q3FY12	Q4FY12	Q1FY13	Q2FY13	Q3FY13	Q4FY13
◆ GSA 4 - Cenpatico 4 % Compliant	88	100	100	92	100	71	94	82
GSA 4 - Cenpatico 4 n	8	11	9	12	15	14	16	17
■ GSA 5 - CPSA % Compliant	100	80	83	100	50	50	100	71
GSA 5 - CPSA n	4	5	6	4	6	14	15	14
▲ GSA 6 - Magellan % Compliant	100	100	100	93	100	64	100	100
GSA 6 - Magellan n	1	8	3	15	12	14	11	14