



The Arizona Long Term Care System (ALTCS)

Tribal Consultation Meeting

August 10, 2010



AHCCCS' Mission and Vision

Mission:

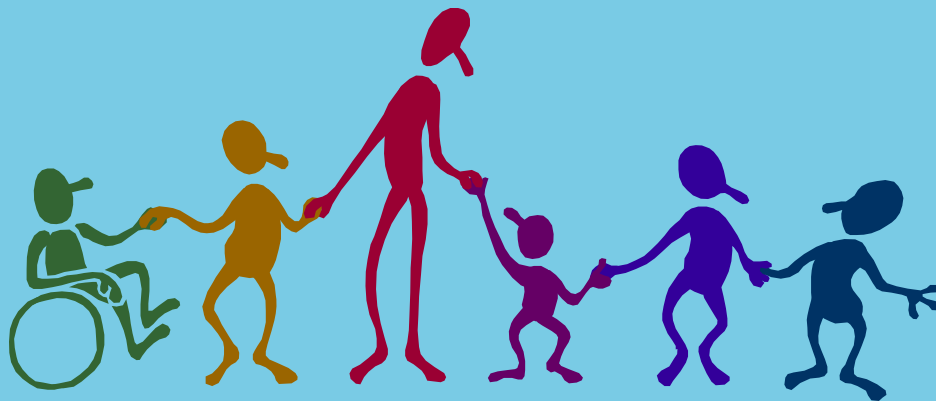
Reaching across Arizona to provide comprehensive, quality health care for those in need.

Vision:

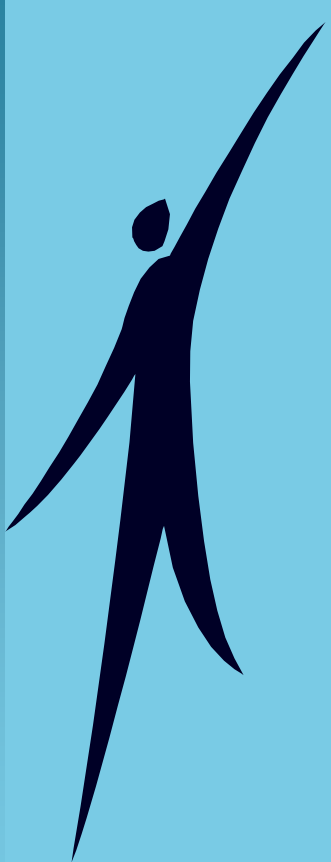
Shaping tomorrow's managed health care from today's experience, quality, and innovation.

AHCCCS Supports a Program That Promotes the Values of:

- Choice
- Dignity
- Independence
- Individuality
- Privacy
- Self-Determination



ALTCS Guiding Principles



Member-centered case management



Consistency of services



Accessibility of network



Most integrated setting



Collaboration with stakeholders

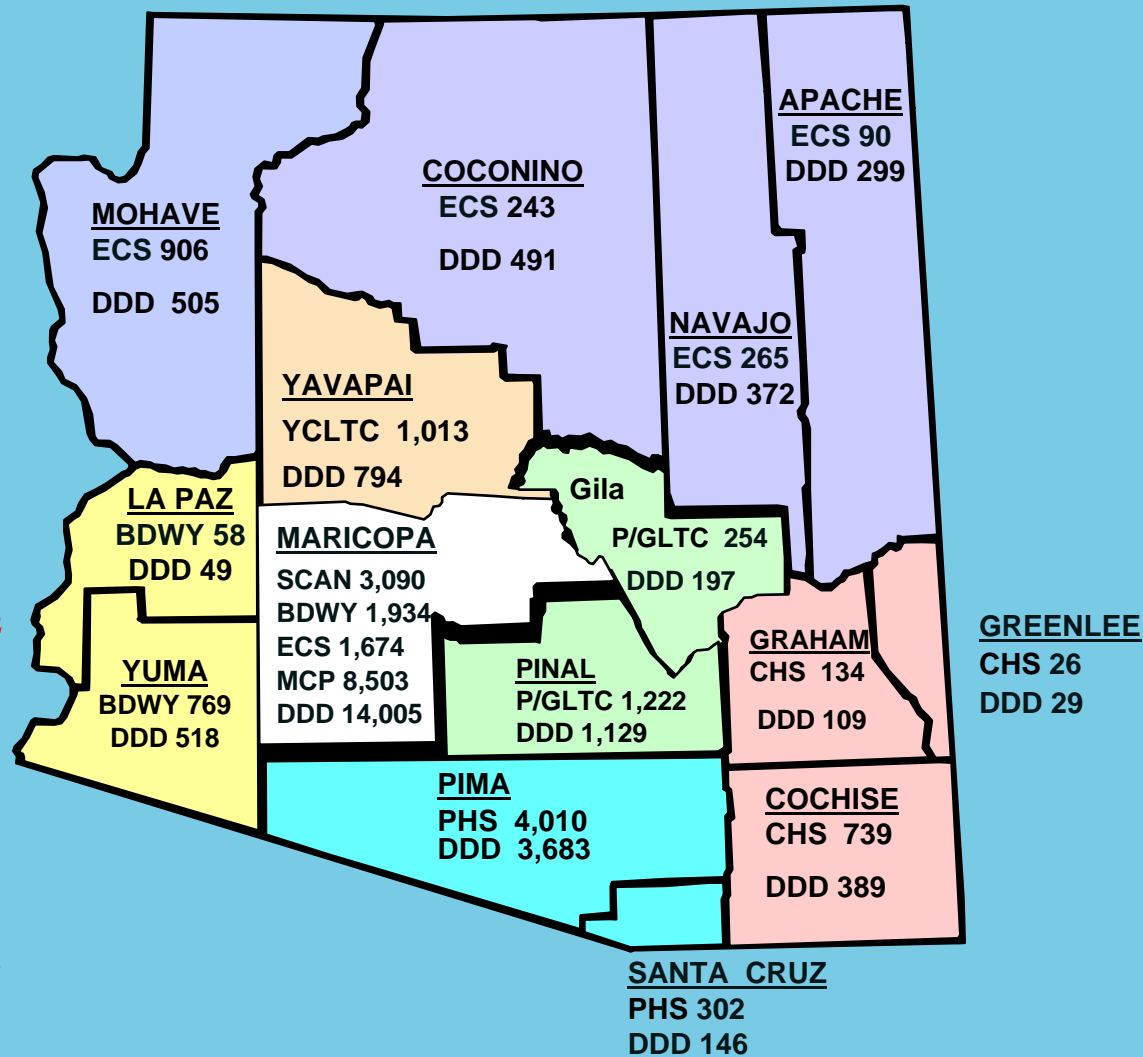




Current System

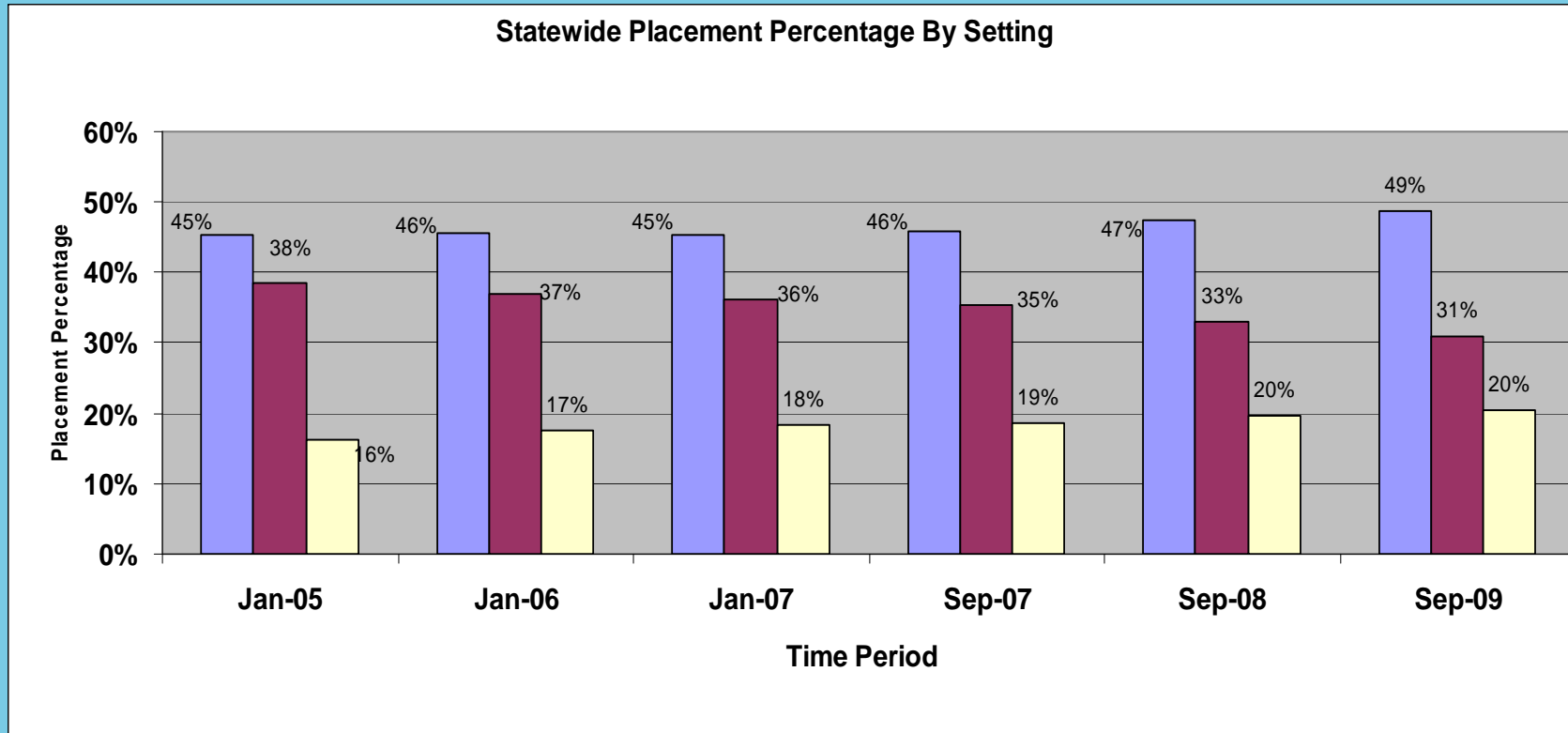
ALTCS Enrollment as of July 1, 2010

Total = 50,242



Elderly and Physically Disabled (EPD) PCs = **25,232**
 American Indian = 358
 EPD American Indian Contractors = **2,295**
 Gila River Indian Community = 180
 Hopi = 58
 Navajo Nation = 1,416
 Pascua Yaqui = 41
 San Carlos = 161
 Tohono O'odham = 229
 White Mountain Apache = 126
 Native American Community Health Care = 84
 Division of Developmental Disabilities/DES = **22,715**
ALTCS ENROLLMENT TOTAL = 50,242

STATEWIDE PLACEMENT PERCENTAGE BY SETTING



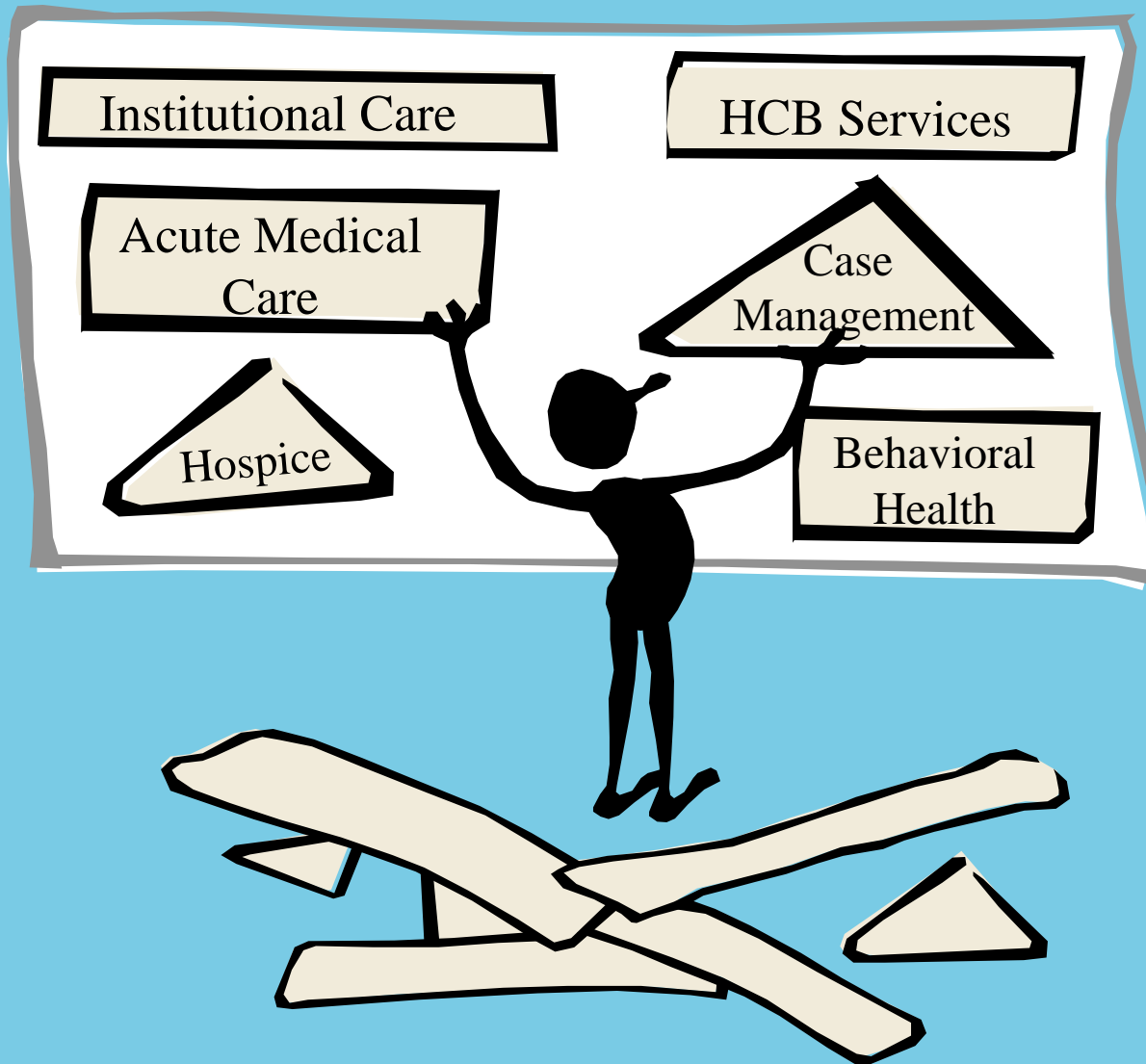
 Own Home

 Alternative Residential

 Institutional

Current System

ALTCS Services





Current System

Home & Community Based Services (HCBS)

- **Adult Day Health Center Services**
- **Adult Foster Care Homes**
- **Assisted Living Homes**
- **Assisted Living Centers**

- **Attendant Care**
- **Housekeeping**
- **Personal Care**
- **Respite Care**

- **Home Health Nurse**
- **Aide visits**
- **Hospice**
- **Therapies**
- **Supplies & DME**

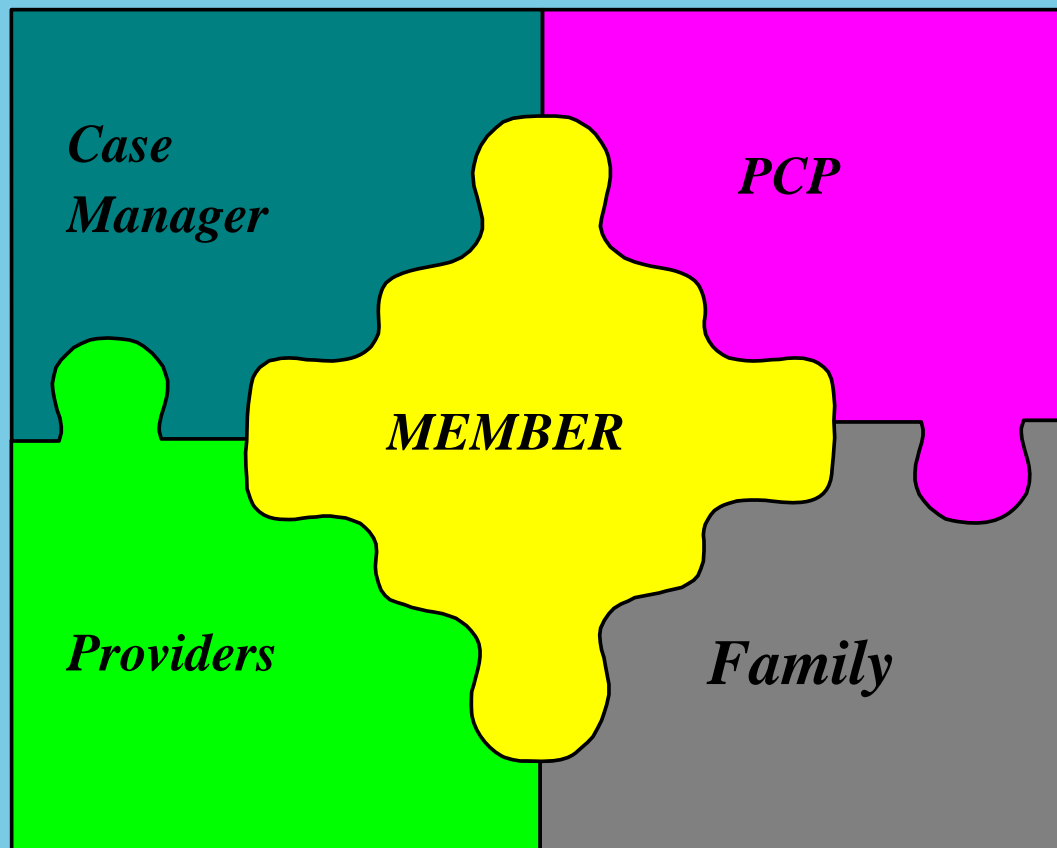
- **Home Delivered Meals**
- **Transportation**
- **Home Modifications**
- **Alert Systems**
- **Adaptive Devices**



Current System

Making It Work For The Member:

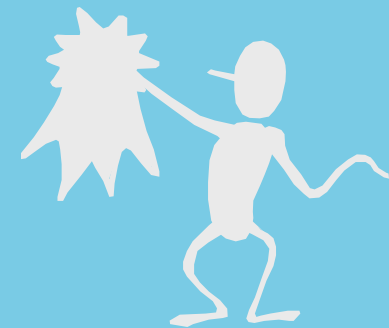
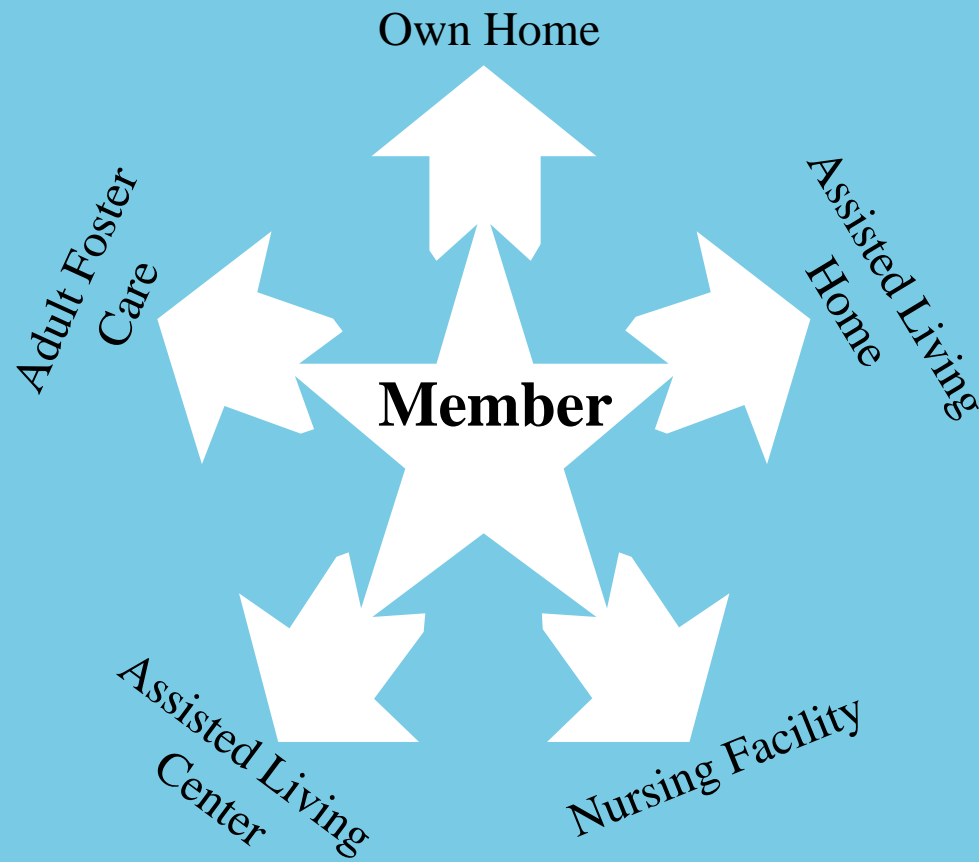
Member Centered Approach



Current System

Making It Work For The Member:

Most Integrated Setting



- Future:
 - ▶ Health Care Quality Improvement
 - ▶ Appropriate Delivery Network
 - ▶ Services to expand HCBS (Attendant Care, Community Transition Services)
 - ▶ Information and Technology
 - ▶ Continued growth and impact on budget.

And.....

