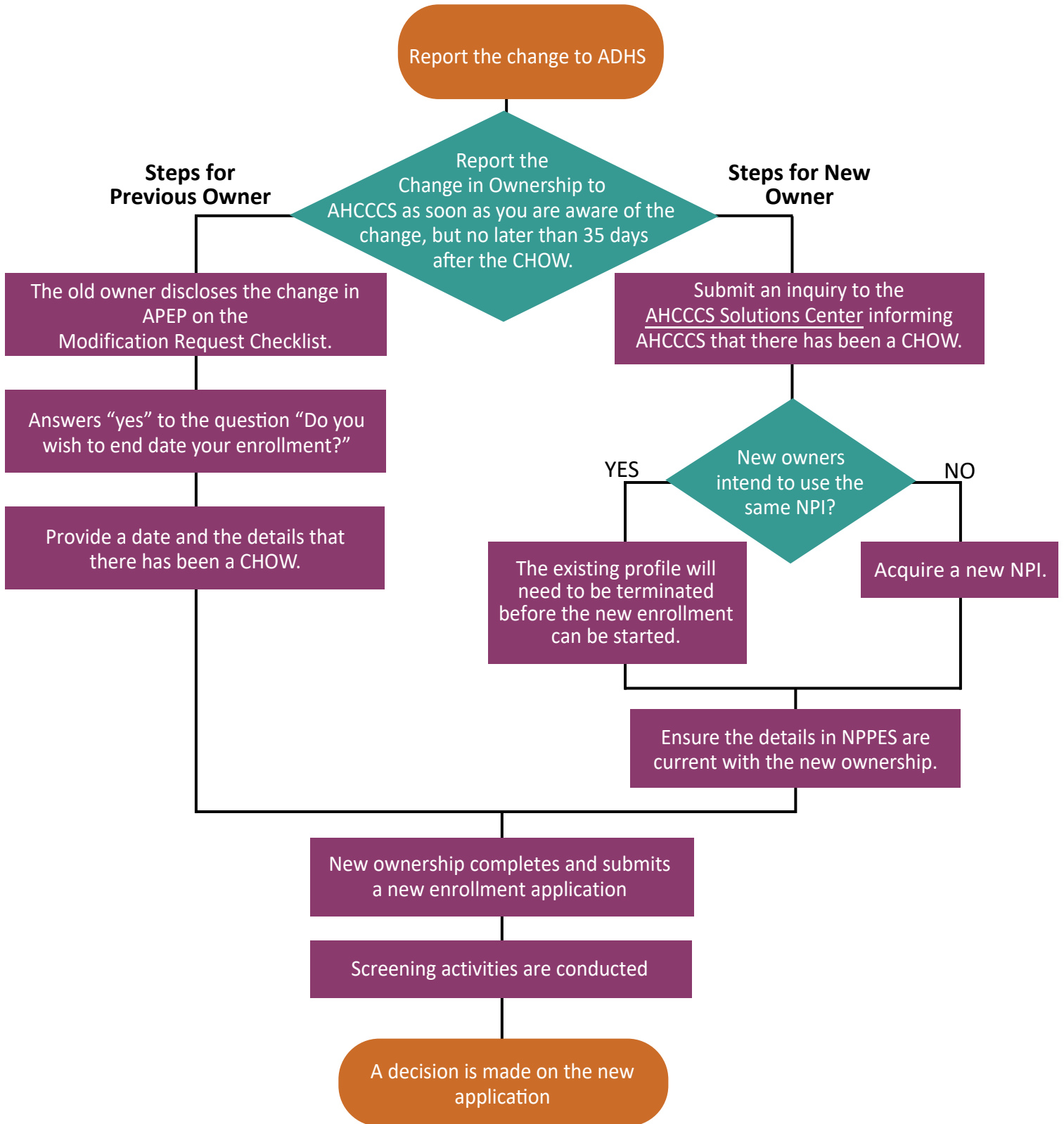


## How do I report a Change in Ownership (CHOW) for an Organization?



Information on Enrollment effective dates can be found in APEP. <https://www.azahcccs.gov/APEP#Timeframes>

Note: In the situation of a CHOW, AHCCCS MAY consider a retroactive enrollment start date to prevent gaps in enrollment between the old ownership and the new.