



The Arizona Long Term Care System (ALTCS)

ALTCS RFP CY 2012

Public Input Meeting

August 9th & September 2nd, 2010 (revised 8/31/10)



ALTCS RFP CY 2012

- 5 Year Cycle
- Typical Timeline for Acute and ALTCS RFPs
 - ✓ February 1 -- Issue RFP
 - ✓ April 1 – Offeror Submissions Due
 - ✓ May 1 – Award Contracts
 - ✓ June thru August – Assess New Contractor Readiness
 - ✓ October 1 – Start of new 5 year contract cycle



AHCCCS' Mission and Vision

Mission:

Reaching across Arizona to provide comprehensive, quality health care for those in need.

Vision:

Shaping tomorrow's managed health care from today's experience, quality, and innovation.

AHCCCS Supports a Program That Promotes the Values of:

- Choice
- Dignity
- Independence
- Individuality
- Privacy
- Self-Determination



ALTCS Guiding Principles



Member-centered case management

Consistency of services

Accessibility of network

Most integrated setting

Collaboration with stakeholders





The Arizona Long Term Care System

History

Current System

Future

Did You Know...

- **Arizona was the first state to implement a statewide, Medicaid managed care system, based on prepaid, capitated arrangements with health plans.**





JANUARY 1989 AHCCCS BEGAN SERVING THE ELDERLY & PHYSICALLY DISABLED (EPD)

In the Beginning:

- Maricopa County
- Pima County

A Few Years Later:

- Yavapai County
- Pinal County
- Cochise County
- 1 Plan per County

Today:

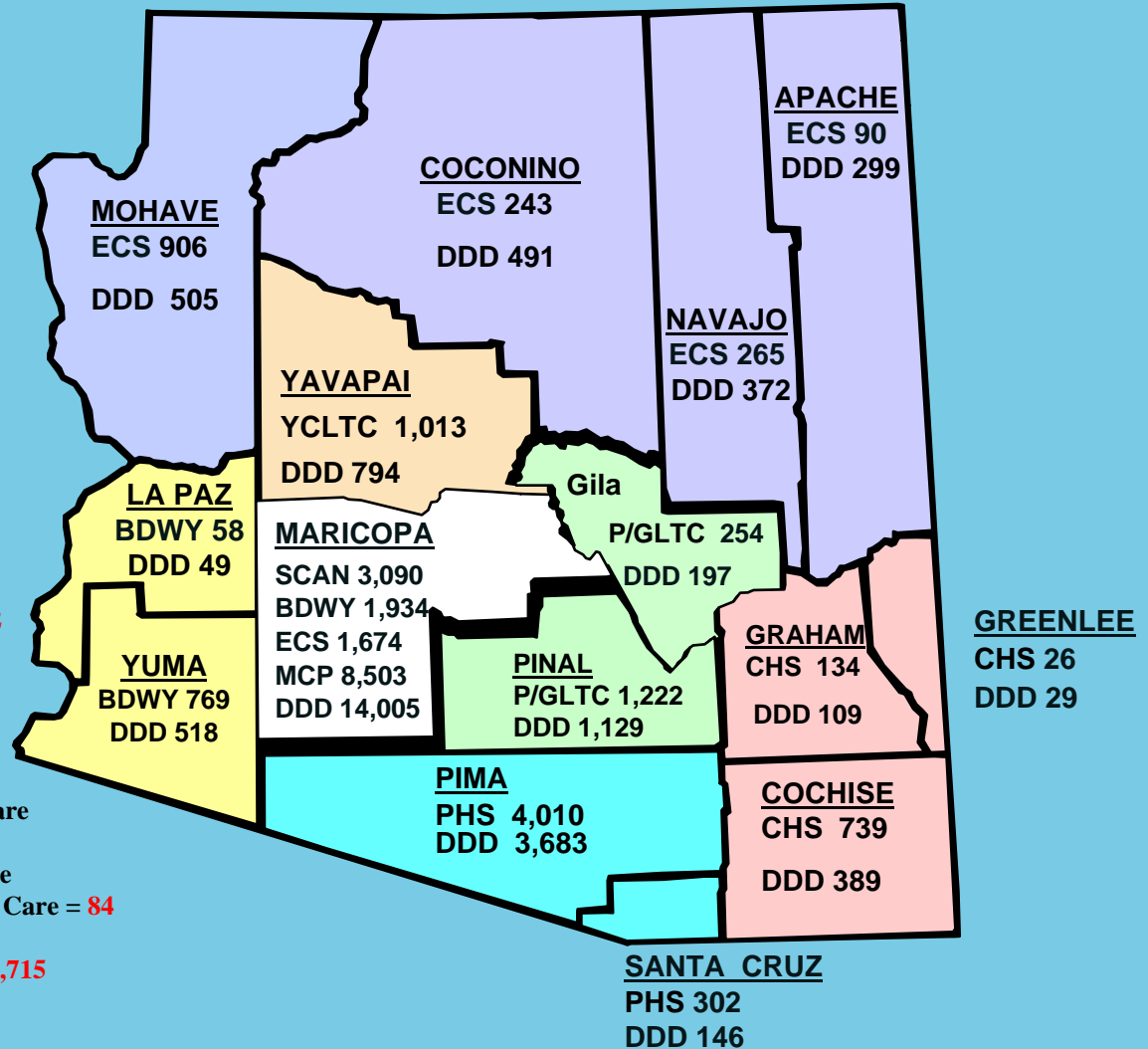
- Bridgeway Health Solutions
 - Cochise Health System
 - Evercare Select
 - Mercy Care Plan
 - Pima Health System
 - Pinal/Gila Long Term Care
 - SCAN Long Term Care
 - Yavapai County Long Term Care
-
- ❖4 Plans in Maricopa County



Current System

ALTCS Enrollment by County as of July 1, 2010

Total = 50,242



Elderly and Physically Disabled (EPD) PCs = 25,232

SCAN = SCAN LTC

BDWY = Bridgeway Health Solutions

EVRSLT = Evercare Select

MCP = Mercy Care Plan

PHS = Pima Health Systems

PCLTC = Pinal/Gila County Long Term Care

CHS = Cochise Health Services

YCLTC = Yavapai County Long Term Care

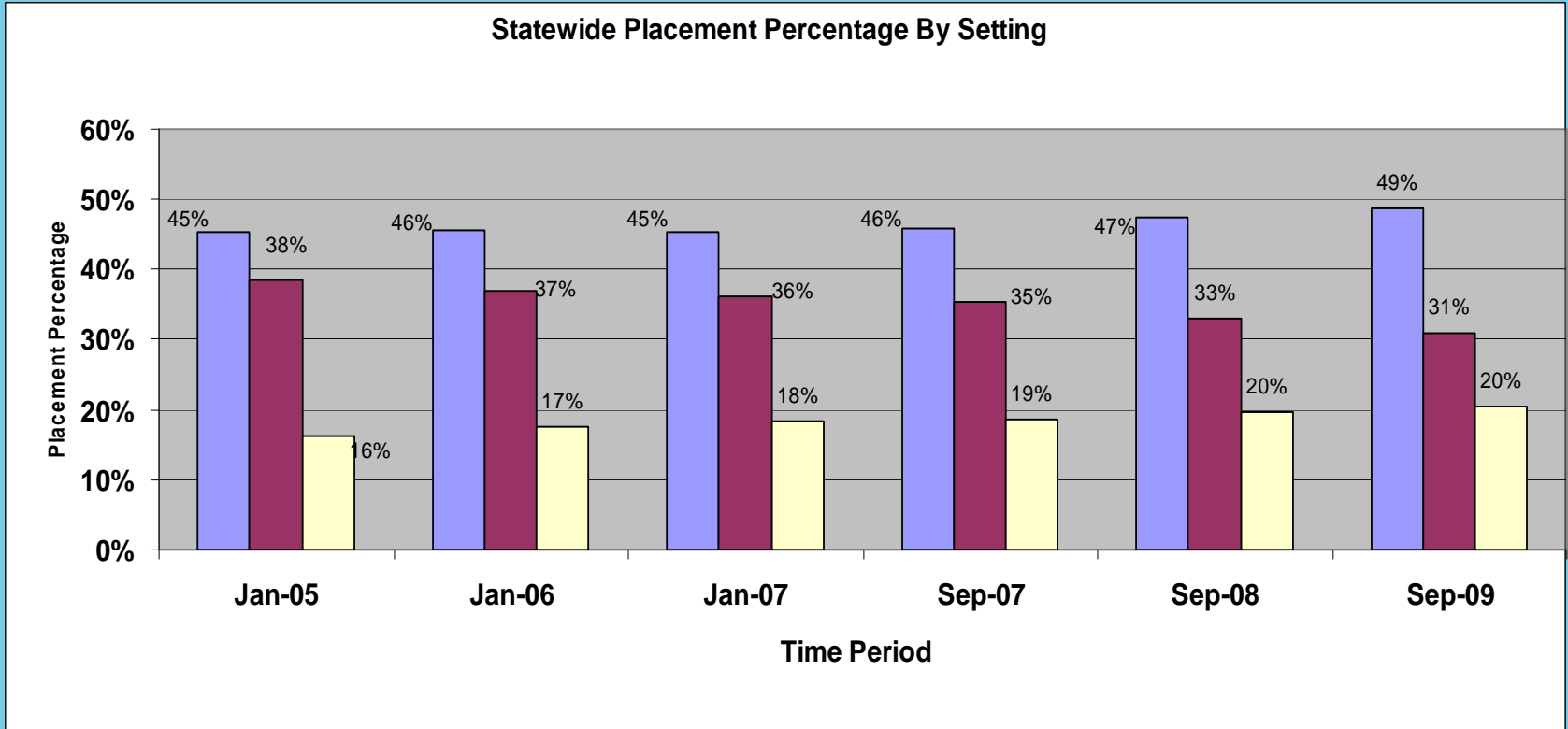
EPD NACH = Native American Community Health Care = 84

EPD American Indian Contractors = 2,211

DD Division of Developmental Disabilities/DES = 22,715

ALTCS ENROLLMENT TOTAL = 50,242

STATEWIDE PLACEMENT PERCENTAGE BY SETTING



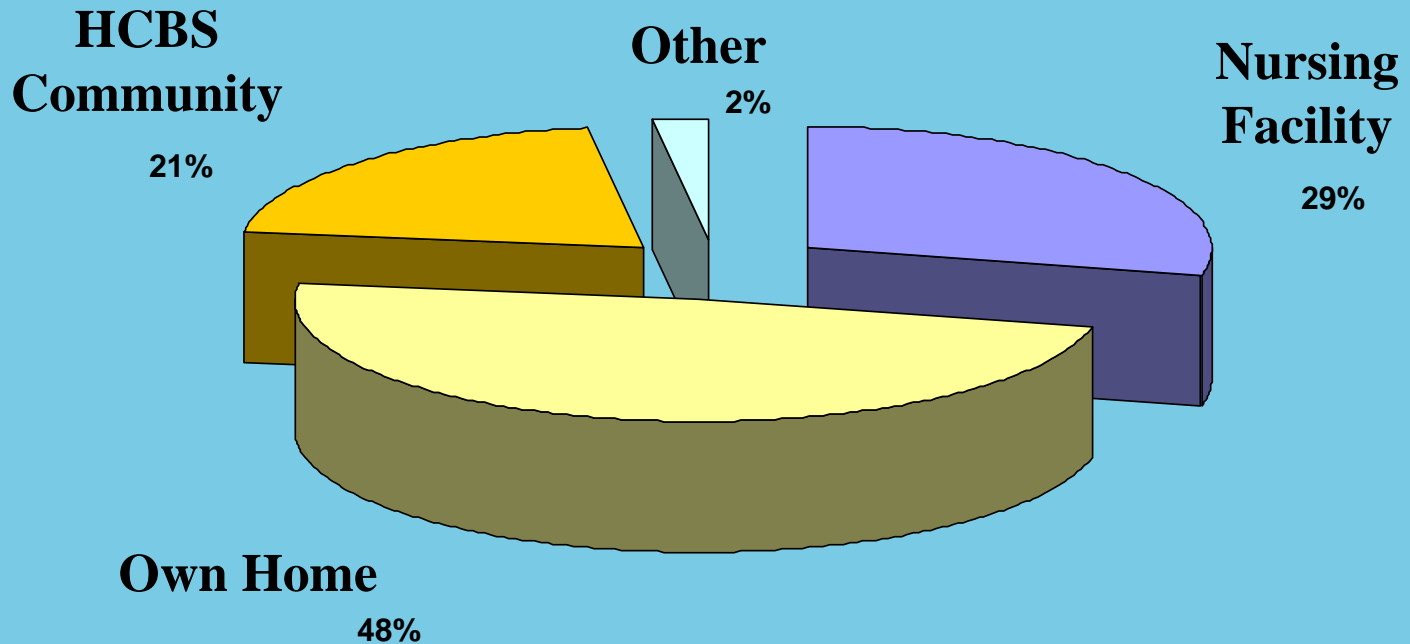
 **Own Home**

 **Alternative Residential**

 **Institutional**

Current System

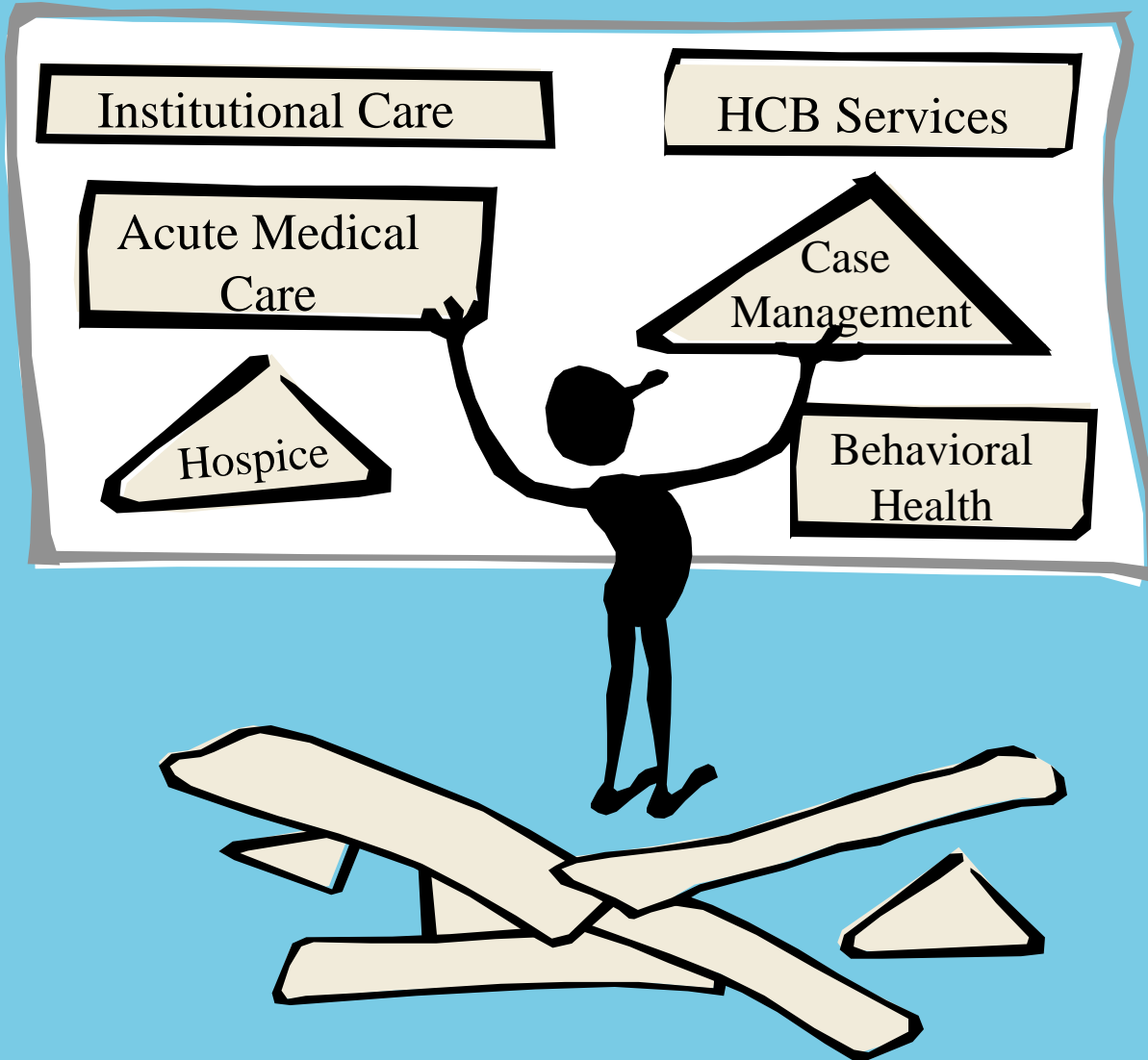
ALTCS Elderly and Physically Disabled (EPD) Only As of July 1, 2010



Nursing Facility	7,322
HCBS Community	5,239
HCBS Home	12,402
Other	593
Total	25,556

Current System

ALTCS Services



Home & Community Based Services (HCBS)

- **Adult Day Health Center Services**
- **Adult Foster Care Homes**
- **Assisted Living Homes**
- **Assisted Living Centers**

- **Home Health Nurse**
- **Aide visits**
- **Hospice**
- **Therapies**
- **Supplies & DME**

- **Attendant Care**
- **Housekeeping**
- **Personal Care**
- **Respite Care**

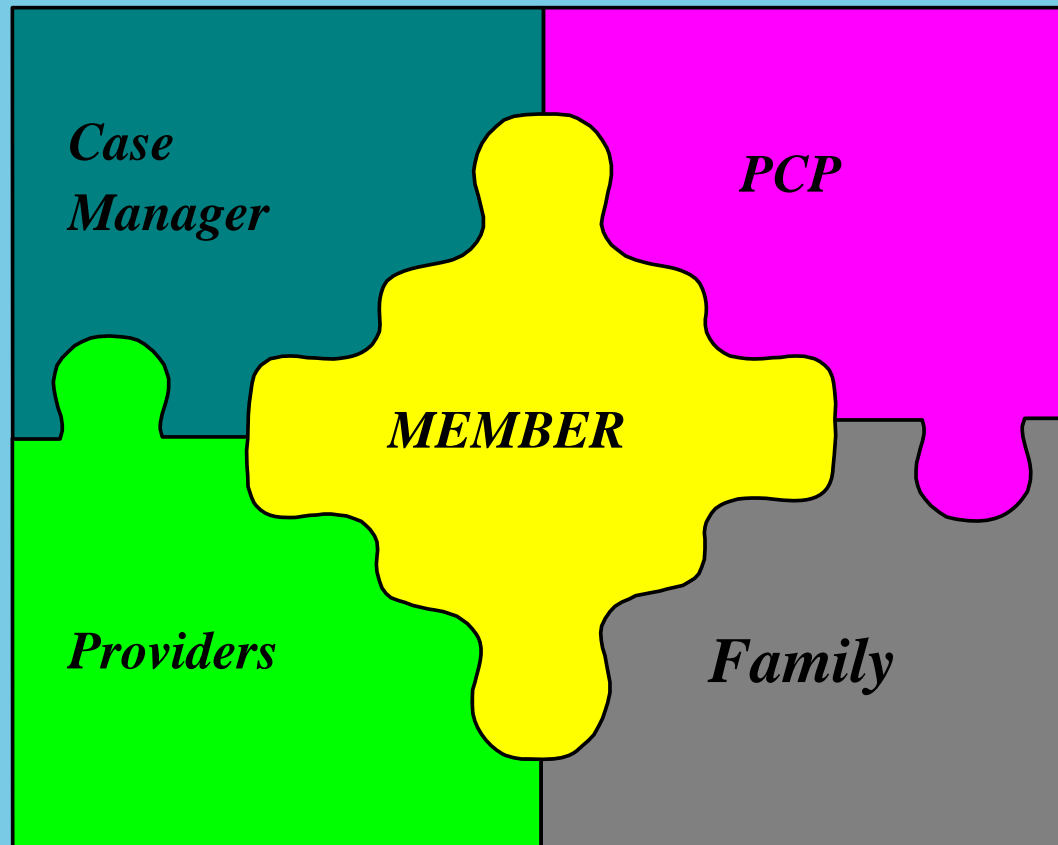
- **Home Delivered Meals**
- **Transportation**
- **Home Modifications**
- **Alert Systems**
- **Adaptive Devices**



Current System

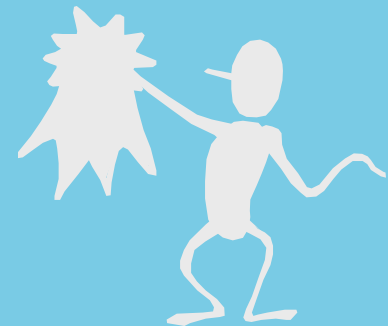
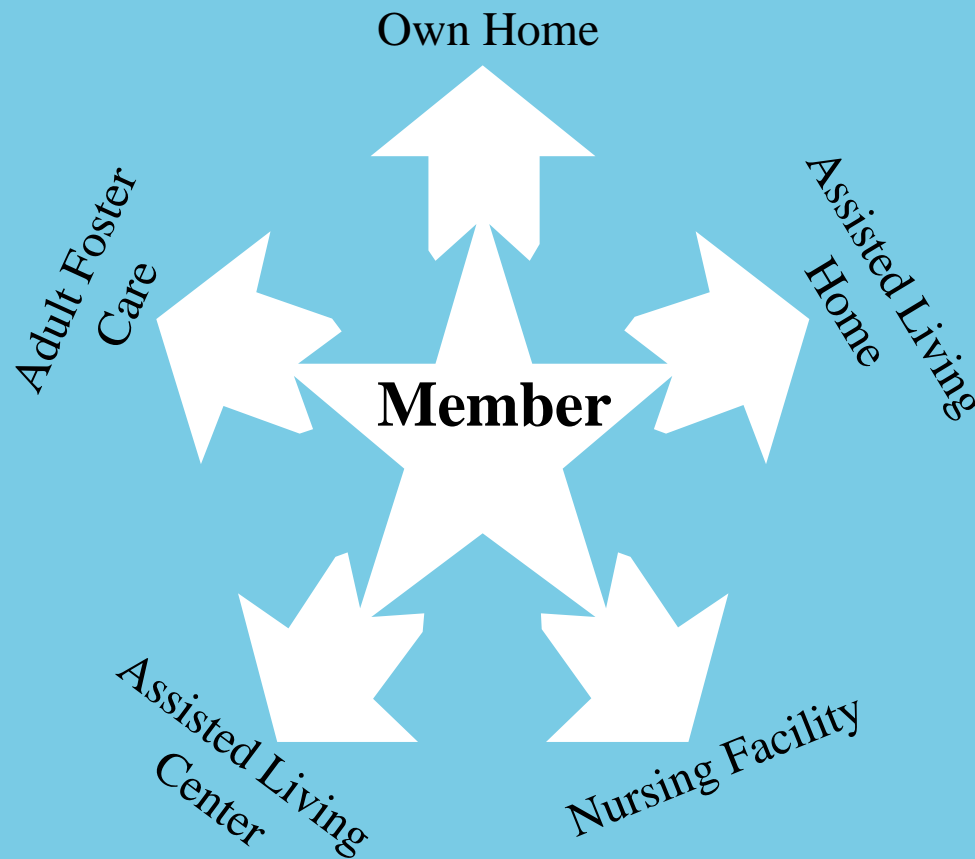
Making It Work For The Member:

Member Centered Approach



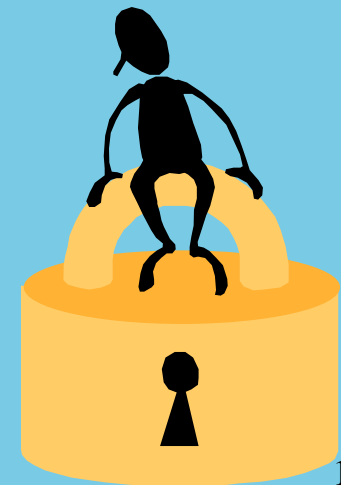
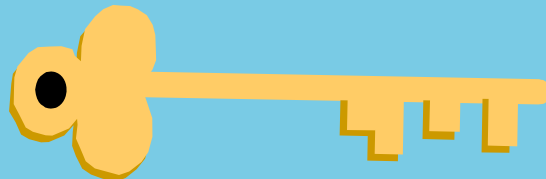
Making It Work For The Member:

Most Integrated Setting



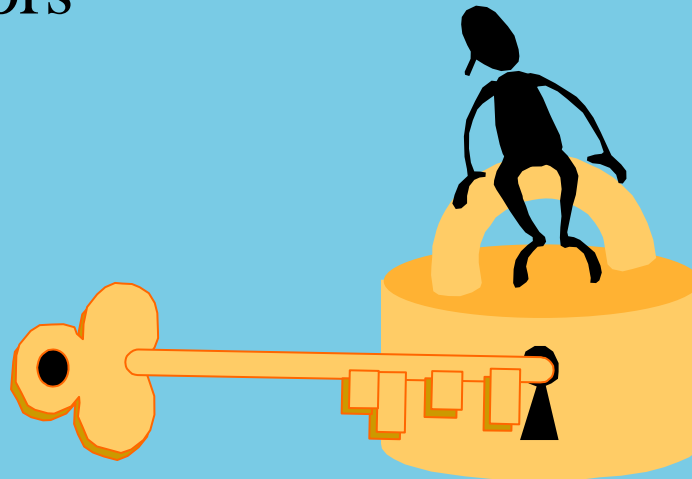
• Key Components of ALTCS:

- ✓ Pre-admission screening (PAS)
- ✓ Integrated continuum of care / choice of community settings/consumer direction
- ✓ Network standards
- ✓ Ability for members to move between settings without interruption in services
- ✓ Case management standards



• Key Components of ALTCS:

- ✓ HCBS financial incentives to Contractors
- ✓ State oversight (Contract, Network, Finance, QM, CM, Annual Reviews, Technical Assistance)
- ✓ Good communication between State and Contractors



- **Future:**
 - ▶ Health Care Quality Improvement
 - ▶ Appropriate Delivery Network
 - ▶ Services to expand HCBS (Attendant Care, Community Transition Services)
 - ▶ <http://www.azahcccs.gov/commercial/purchasing/purchasing.aspx>
 - ▶ Information and Technology
 - ▶ Continued growth and impact on budget.

And.....





Public Input

- What could AHCCCS change to improve the ALTCS?
- What are important issues about MCO performance that AHCCCS should consider when selecting contractors?
- Other?
- Please send any questions to:
PublicInput@azahcccs.gov